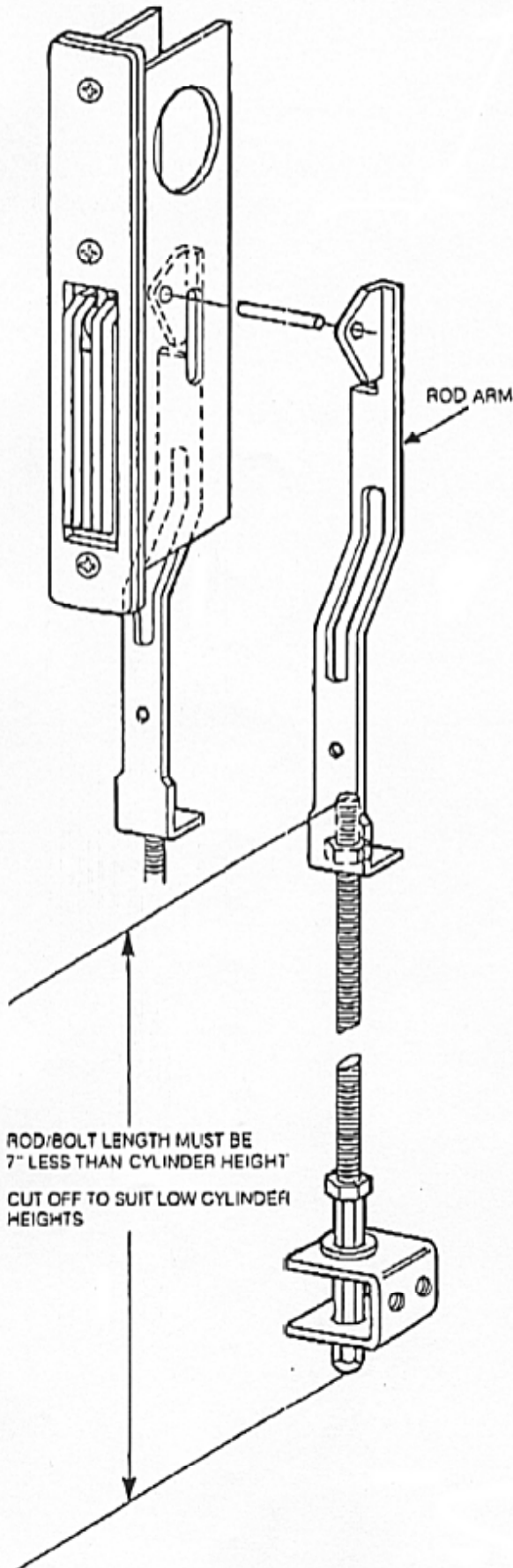


Threshold Bolt

INSTALLATION INSTRUCTIONS

(For Use With DT-1850 or DH-1820 Type Lock)



1. Drill and tap bottom inside face of Stile as shown.
2. Drill 1/2" bolt hole in threshold as shown.
3. With Lock Bolt retracted, fasten Threshold Bolt Rod to lock using Drive Pin
4. Adjust rod length to 7" less than Cylinder height (center of cylinder to bottom of door). Cut excess length from threaded portion of rod. Attach to rod arm.
5. Insert lock with attached Threshold Bolt AND SECURE LOCK IN STILE.
6. Install Bottom Guide and fasten securely.

