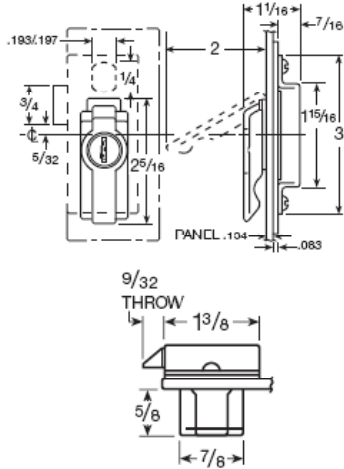




**15767 & 15768  
ENCLOSURE LOCKS  
(PANELBOARD)**  
Disc Tumbler  
Can be Masterkeyed

**Material:** Pressure Cast Lift Lever & Bolt, Steel Case, Zinc Plated Standard  
Regularly furnished right hand, left hand available when specified  
**Operation:** Self latching. Latch bolt retracted by lifting up on lift lever

except when lever is locked down by key. Key is removable in both locked and unlocked positions.  
**15768:** Same as **15767** except without key locking mechanism



Regular Key Changes	Key Blank No.	Masterkeyed Key Changes	Key Blank No.
200	5865JVR (5 Disc)	180	5860KS (5 Disc)

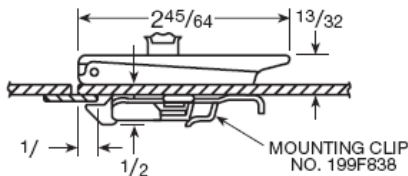
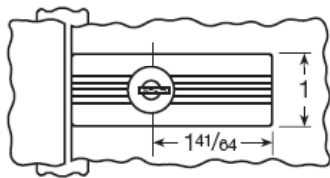
Part No/Cyl Length	Stock ID No.	MKYD	US26D	Stock Qty.	Approx. Boxed Wt. (lbs./ oz.)
15767 RH KA - CAT45	00224		•	25	9/5
15767 RH CAT60	00225		•	25	9/5
15767		•	•		
15768 Non-locking	00226		•	25	9/5
15768			•		



**15867 & 15868  
ENCLOSURE LOCKS  
(PANELBOARD)**  
Disc Tumbler  
Can be Masterkeyed

**Material:** Pressure Cast Lift Lever, Steel Case, Zinc Plated Standard  
Reversible for right or left hand door  
**Operation:** Self latching. Latch bolt retracted by lifting up on lift lever except when lever is locked down by key. Key is removable in either

locked or unlocked position. Easy installation with steel mounting clip **199F83**.  
**15868:** Same as **15867** except without key locking mechanism



Regular Key Changes	Key Blank No.	Masterkeyed Key Changes	Key Blank No.
200	5865JVR (5 Disc)	180	5860KS (5 Disc)

Part No/Cyl Length	Stock ID No.	MKYD	US26D	Black	Stock Qty.	Approx. Boxed Wt. (lbs./ oz.)
15867 KA - CAT60	00227		•		25	7/12
15867		•	•			
15868		•	•			
199F838				•		

**Notes:**

- Stock items are not shaded and are available in stock quantity units only. Use Stock ID No. when ordering stock items.
- Made - To - Order items are shaded.
- For explanation of finishing symbols, refer to Page 2.