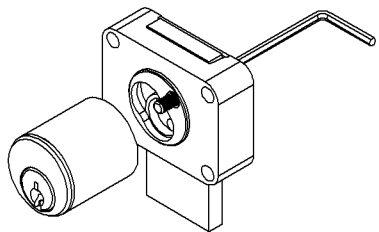
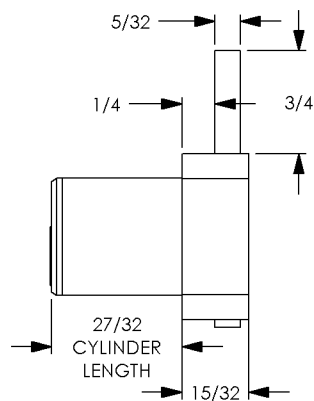
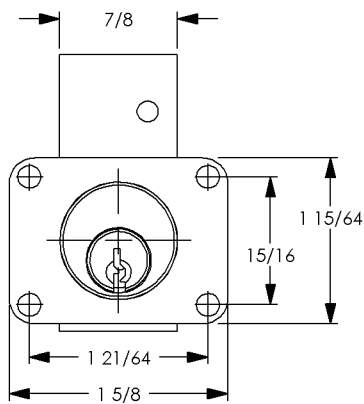


# STOCK LOCKS®

Manufactured by

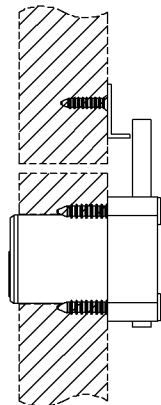
**NATIONAL  
CABINET LOCK®**

## C8178 DRAWER LOCK - 4 PIN TUMBLER - BRASS CYLINDER

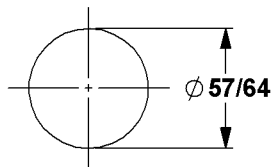


USE A 5/64 ALLEN  
WRENCH FROM THE  
BACK TO REMOVE  
THE CYLINDER.

NOTE: LOCK MUST  
BE IN THE POSITION  
SHOWN.



### CYLINDER MOUNTING HOLE



DRILL 1/16 INCH DIAMETER PILOT  
HOLES FOR MOUNTING SCREWS

LOCK IS SHOWN IN LOCKED  
POSITION FOR STANDARD  
DRAWER APPLICATIONS.