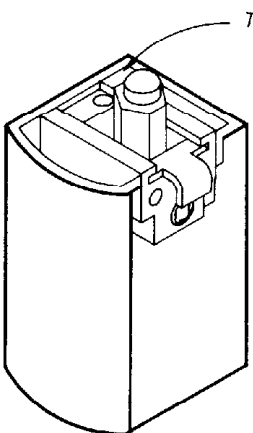

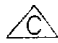


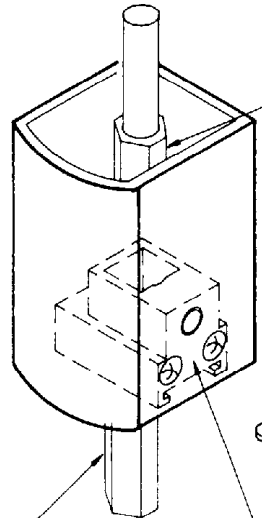
USAGE: 1085,2085,2086,  
2185,3185B&3186



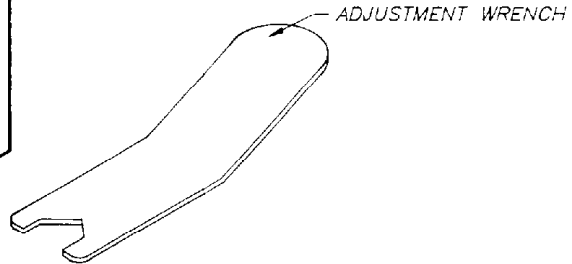
**ADJUSTMENT INSTRUCTIONS.**

-  PLACE ADJUSTMENT WRENCH ONTO BOLT. TURN WRENCH CLOCKWISE
-  TO RETRACT BOLT—COUNTERCLOCKWISE TO EXTEND BOLT.

**NOTE:**  
TOP BOLT GUIDE ASSY USED WITH 1085,2086 & 3186 ONLY.



**NOTE:**  
UPON FINAL AJUSTMENT, ASSURE THAT FLAT ON HEX. BOLT RUNS PARALLEL TO FACE OF STILE WALL.



Order On-Line:  
<http://www.mrlock.com>

C 11/3/95	REVISE ADJ. INSTRUCTIONS	ECN1116	RM
B 11/5/95	REVISE ADJ. INSTRUCTIONS	ECN982	RM
DIMENSIONAL TOLERANCES UNLESS OTHERWISE SPECIFIED DECIMAL DIMENSIONS XX ±.010 DECIMAL DIMENSIONS XXX ±.005 ANGULAR ± ° FRACTIONAL ± 1/64		APPROVALS APPROVED CHECKED DRAWN R.M. 11/4/95	DATE DATE DATE
FILE NO.	MATERIAL	SCALE	NONE
NEXT ASSY.	FINISH	ADJUSTMENT INSTRUCTIONS	SHEET 1 OF 1 SHEETS
QTY. USED 1	HEAT TREAT	TOP & BTM BOLT GUIDE ASSY	DWG. NO. 10-860 C



3447 UNION PACIFIC AVE.  
LOS ANGELES, CALIF. 90023