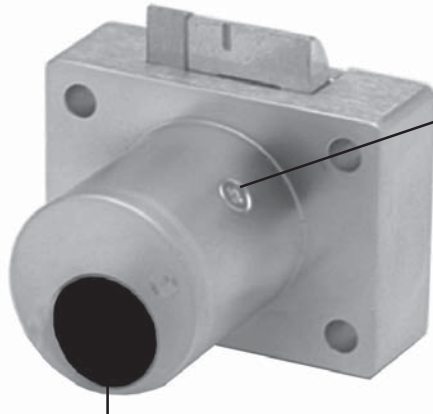


Product

850 Series

Schlage "C" Keyway
Deadlatching Drawer Lock

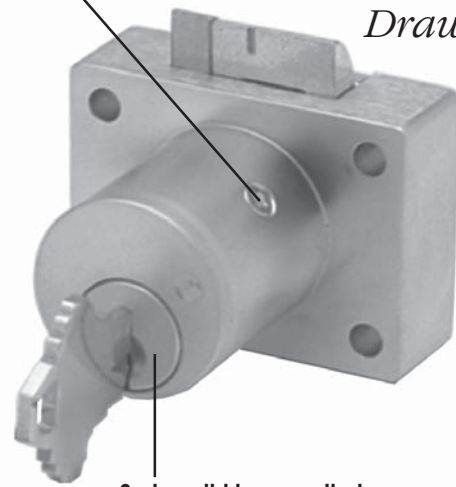
*850LC Series
Drawer Lock*



Less Cylinder
Accepts other manufacturer's
Schlage-compatible deadbolt
cylinders

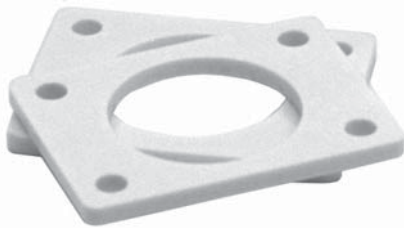
**Cylinder
retaining
screw**
For quick and
easy rekeying

*850S Series
Drawer Lock*



6-pin solid brass cylinder
Schlage "C" keyway

10-350 internal spacers
For a flush fit on varying material
thicknesses



Includes 850-210 / 850-211
matching strike plate

U.S. Patent Nos. 4,899,563;
4,920,774; 5,657,652

OLYMPUS
LOCK, INC.

The cabinet lock innovators.

18424 Highway 99 • Lynnwood, WA 98037
Phone 206-362-3290 • Toll-free 800-525-0954 • Fax 206-362-3569
www.olympus-lock.com • info@olympus-lock.com

850 SERIES

Schlage "C" Keyway Deadlatching Drawer Lock



General Specifications

850S Deadlatching Drawer Lock

Rekeyable: Easily rekeyable via patented set-screw cylinder removal mechanism

Certifications: ANSI A156.11, grade 2

Body: Zinc die cast

Latchbolt: Brass, 1/4" projection

Barrel lengths: 1-1/8" and 1-3/8"

Barrel diameter: 1-1/8"

Finish: US26D (satin chrome) or US3 (bright brass)

Cylinder: Schlage "C" Keyway 6 pin solid brass cylinder

Stock keying: KD or KA - 5 pin standard, stock KA# 101, 102

Master keying: 5 pin standard, 6 pin available

850LC Deadlatching Drawer Lock

Rekeyable: Easily rekeyable via patented set-screw cylinder removal mechanism

Certifications: ANSI A156.11, grade 2

Body: Zinc die cast

Latchbolt: Brass, 1/4" projection

Barrel lengths: 1-1/8" and 1-3/8"

Barrel diameter: 1-1/8"

Finish: US26D (satin chrome) or US3 (bright brass)

Cylinder: Less cylinder, accepts other manufacturer's Schlage-compatible deadbolt cylinders

Stock keying: n/a

Master keying: n/a

Accessories

1-1/8" barrel length lock includes:

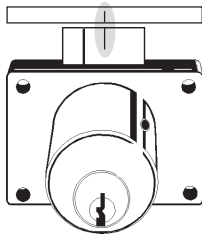
- 2 #10-350 plastic spacers
- 1 #850-210 matching strike

1-3/8" barrel length lock includes:

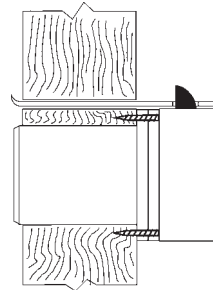
- 1 #850-211 matching strike

Available separately:

- #TR78 trim ring



Note: Line up center mark on latch with center mark on strike for correct strike placement.



Note: Strike must be lined up so that dead lock portion of latch is depressed when drawer is closed.

850 Series Dimensions

