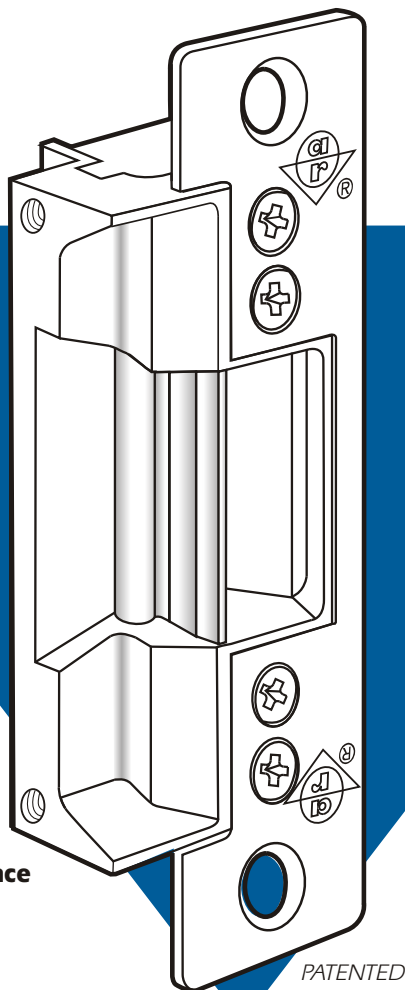


VOLTAGE	
12 or 24 volt DC	
CURRENT DRAW/AMPS	
Volts	DC Cont. or Intermittent
12	.33
24	.17

7300 Compact Strike

ANSI/BHMA Type EO9322 (Grade 2)



 **UL Listed for Burglary Resistance**

▼ Case

Approx. 1-1/8" x 3-3/8" x 1-1/16" deep.
Made of zinc-aluminum alloy.

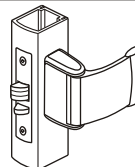
▼ Strike Lip

Basic strikes have lip of proper length for 1-3/4" thick door that closes flush with jamb edge. Where door thickness or jamb shape differs from this standard relationship, extended lip available, specified by last dash number.

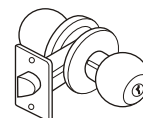
▼ Fail-Secure/Fail-Safe

Shipped standard in fail-secure mode. Field convertible from one mode to the other.

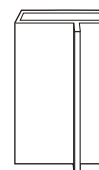
LATCH TYPE



Adams Rite or Cylindrical Latches with 1/2" to 5/8" Projection.



DOOR FRAME TYPE



Aluminum Jamb

▼ Strike Opening

5/8" x 1-3/8" x 1/2" deep. Bolt retainer jaw is hardened steel. Strike accepts bolt of any Adams Rite 4500/4700/4900 Series deadlatch.

▼ Faceplate

Measures 1-1/4" x 4-7/8". Faceplate is flat, with radiused corners. Available in our three most popular architectural finishes.

▼ Function

Remote electrical control of any door equipped with an Adams Rite Series 4500/4700/4900 (or similar) deadlatch or "key-in-knob" sets. Electrical actuation unlocks strike jaw, releasing latchbolt so door can be opened without operating latch itself. Extremely compact mechanism fits into jamb sections as shallow as 1-1/16".



ADAMS RITE
MANUFACTURING CO.

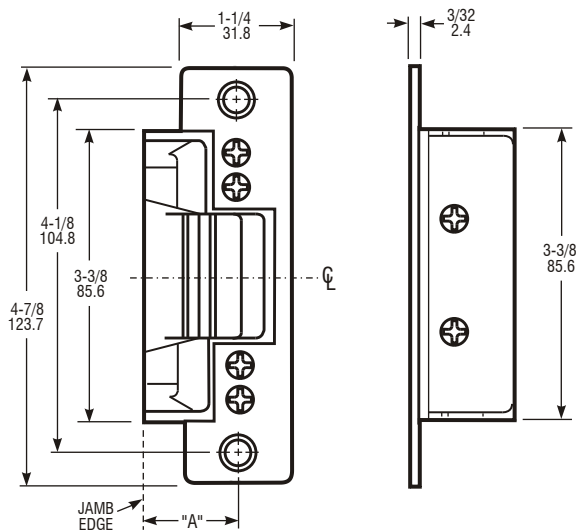
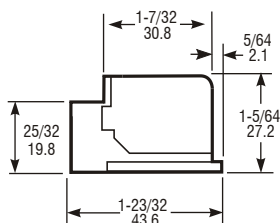
260 Santa Fe Street
Pomona, California 91767
(800) 872-3267 Fax: (800) 232-7329
www.adamsrite.com

7300 Electric Strike

DIMENSIONS

INCHES
MILLIMETERS

Nominal, subject to tolerance extremes.

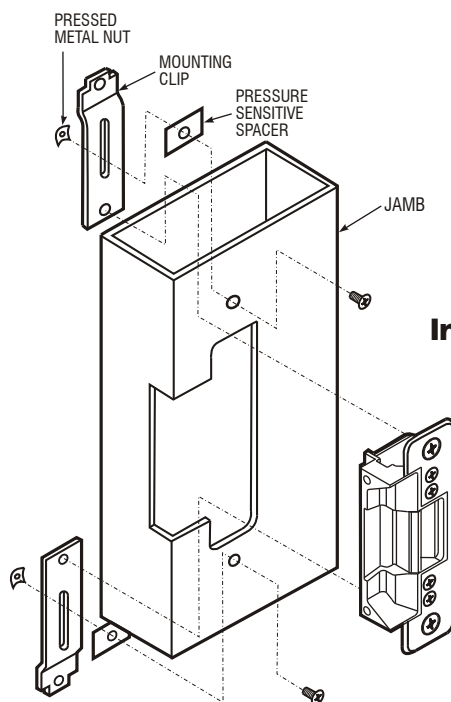
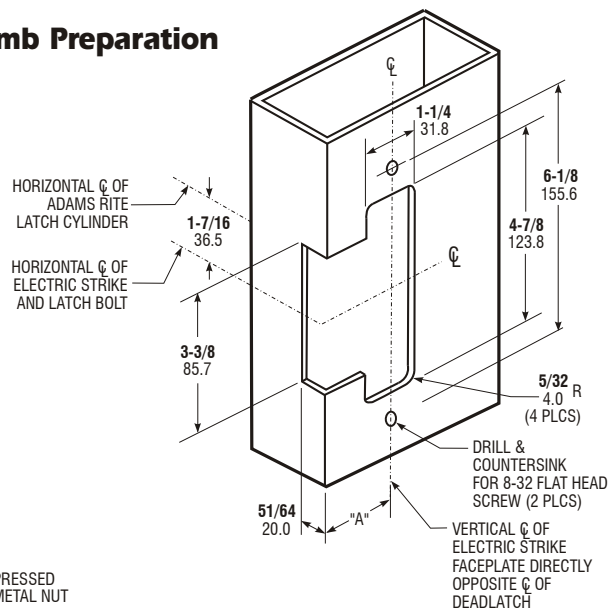


STANDARD UNIT FITS DIM. "A"
UP TO 1.09" (SEE DASH NO.)

**MOUNTING BRACKETS
FURNISHED**

INSTALLATION

Jamb Preparation



Installation

**Turn strike
upside down for
opposite hand.**

HOW TO ORDER

*Specify quantity and the following information.
Specify 7303 for model with no faceplate.*

Voltage

- 3** 12 Volt DC
- 5** 24 Volt DC

Current & Duty

- 1** DC Continuous or Intermittent

Features*

- 0** Std/Fail-Secure

7300 - 310 - 628 - 00

Finish

- 628** Clear Anodized
- 313** Dark Bronze Anod.
- 335** Black Anodized

Lip Extension (Dim."A")
(Door Centerline to Jamb Edge)

- 00** 1.07" or less
- 50** 1.38"
- 05** 2.00"
- 07** 2.25"

*Fail-secure can be field converted to fail-safe.

*Fail-secure can be field converted to fail-safe.

STANDARD PACKAGE

Individually boxed with mounting screws. Includes mounting clips and adhesive shims.

OPTIONS

Choice of voltage in DC. Available with extended strike lip (see chart). Assembled fail-secure as standard (locked when unpowered), but can be field-converted to fail-safe.