

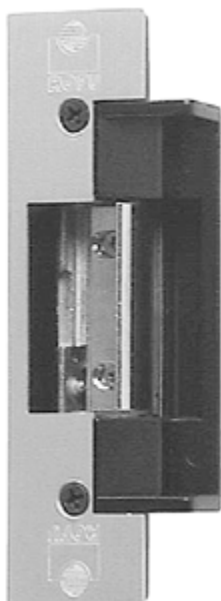
**ROFU® ELECTRIC STRIKE  
MODEL 1702**



1702 - SERIES W/FACEPLATE 1-1/4" x 4-7/8"

**Model 1702** — Fail - Secure. (Non Fail - Safe)

Electric strikes for use with mortise and cylindrical locksets.  
For Commercial and Residential, New and Retrofit Uses.



**STANDARD FEATURES**

- Aluminum Faceplate
- Frame Type - Hollow Metal or Aluminum
- Corrosion - Resistant case and moving parts.
- Tamper Strength Test - 1000 lbs (454 kg)
- Cycle Test 500,000 cycles
- Keeper Depth - 5/8", Maximum Latch Projection possible with 1/8" Door/Frame Clearance - 3/4"
- Reversible - Non Handed
- Adjustable Keeper
- Limited Warranty - 36 Monthss

[Line Art](#)

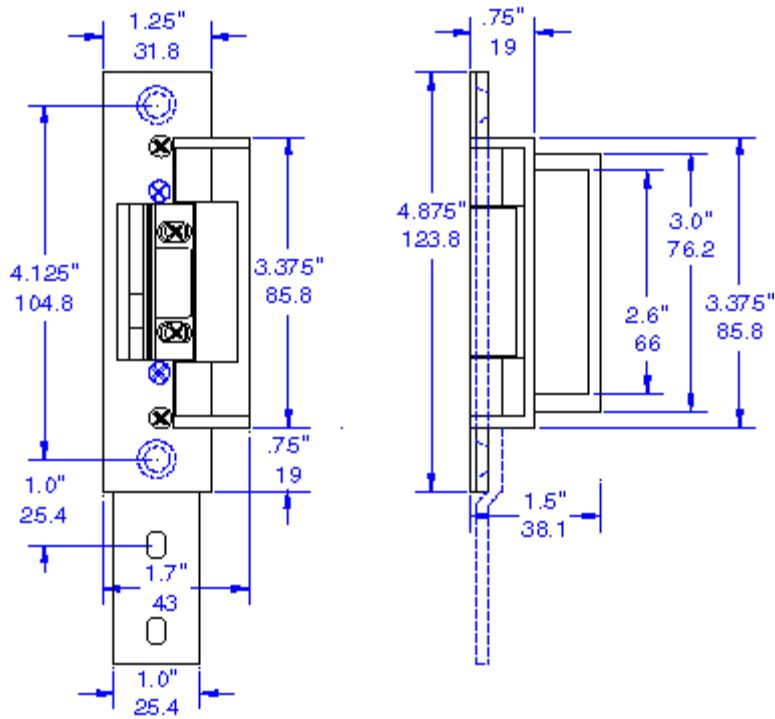
Installation Drawing  
[Hollow Metal](#) - [Wood](#) -  
[Aluminum](#) - [Aluminum Radiused](#)

<b>Available in the following Voltages and Finishes:</b>	
Specify Finish	xUS28, xUS10B or xUS4
Voltage, Fail Secure	x01=8-16VAC/3-6VDC (Intermittent Duty) x04=12VAC/12VDC (Intermittent Duty) x05=12VAC/12VDC (Continuous Duty) x07=24VAC/24VDC (Intermittent Duty) x08=24VAC/24VDC (Continuous Duty) x14=48VAC/48VDC (Intermittent Duty)

<b>Optional Features</b>	
Radius Faceplate	For double aluminum doors

---

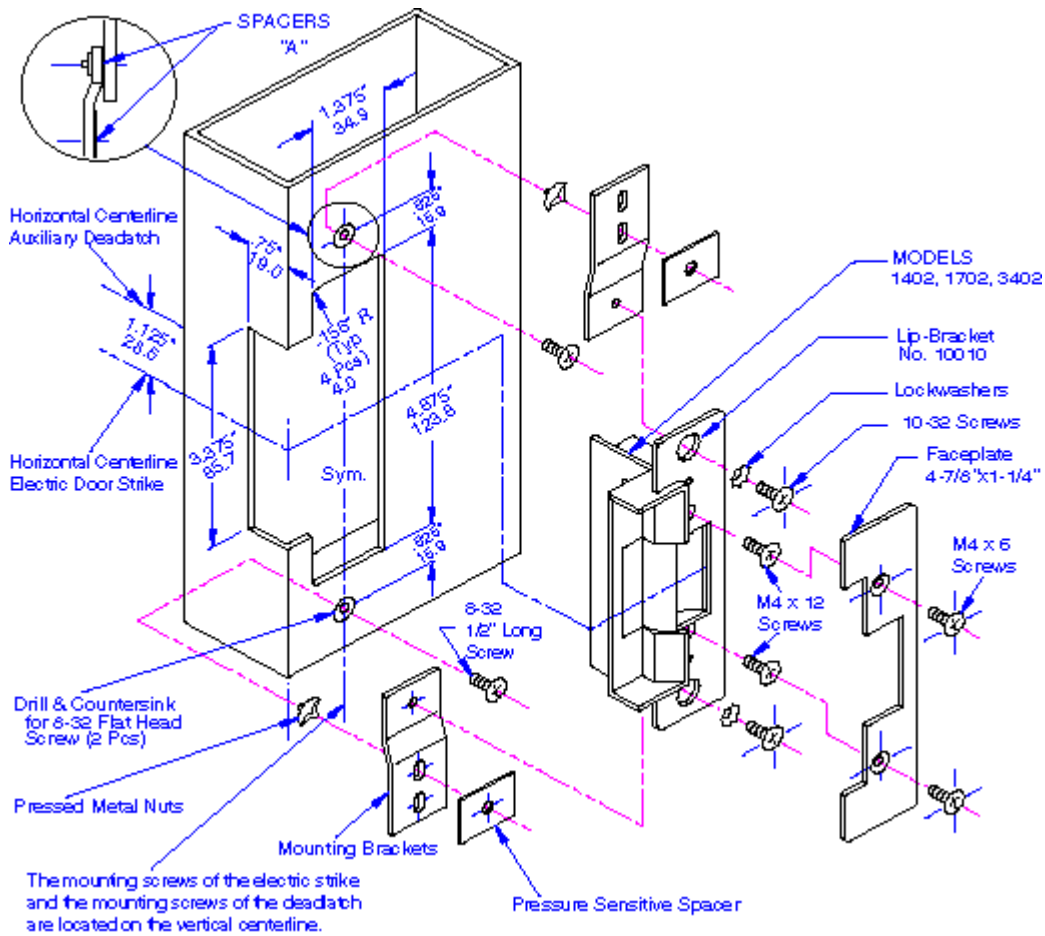
**1702 SERIES - LINE ART**



Note: Not to scale. Technical Data are subject to change without notice.  
 Dimensions in Inches and Millimeters

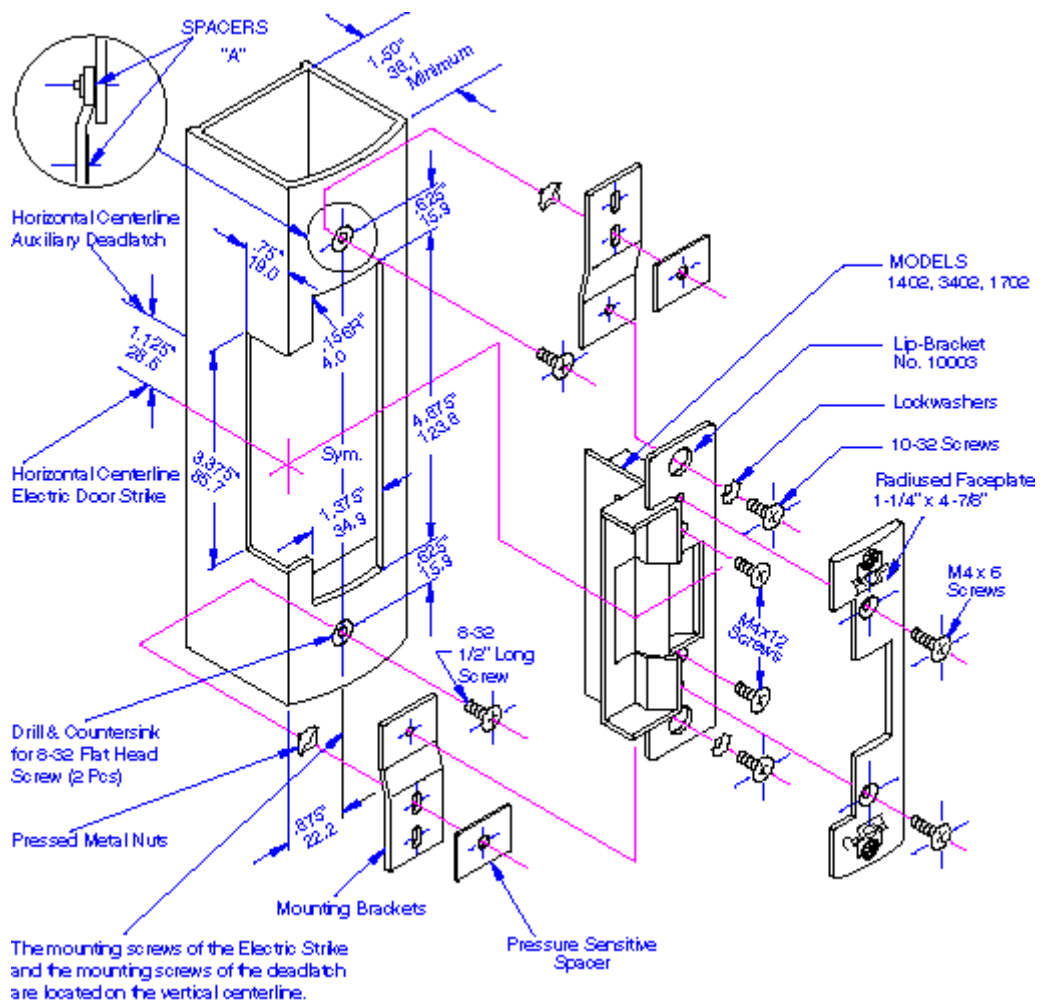
---

**1702 - Series Installation  
 Aluminum Jamb**



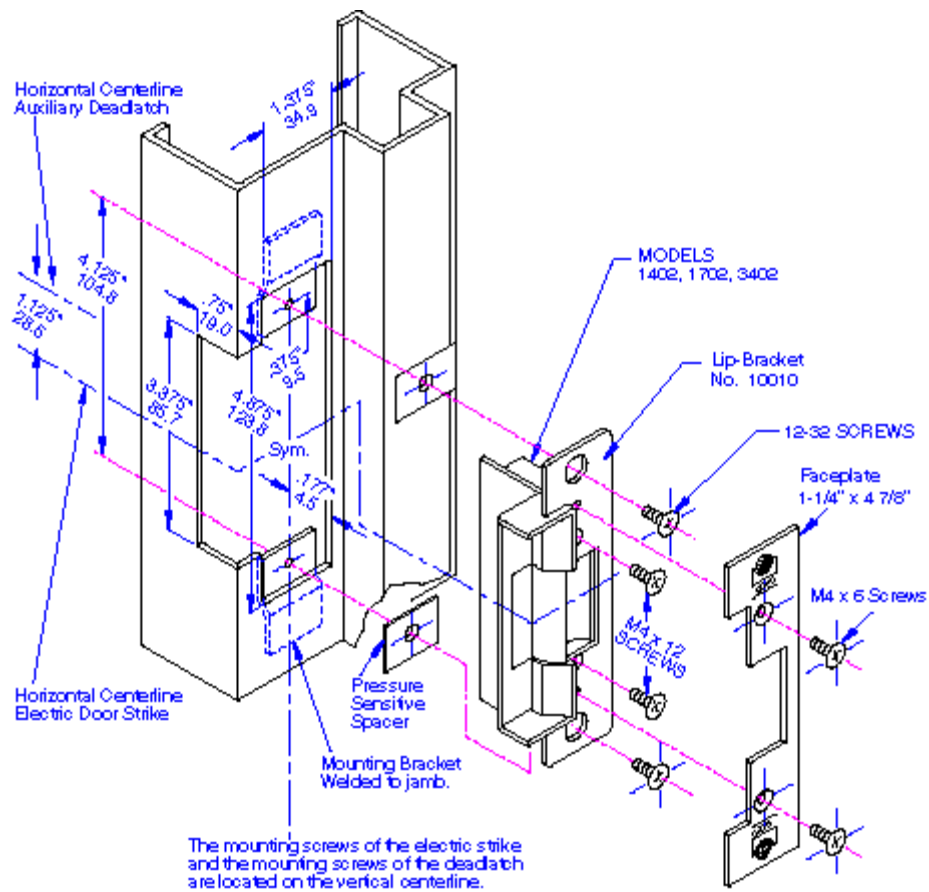
Note: Not to scale. Technical Data are subject to change without notice.  
 Dimensions in Inches and Millimeters

### 1702 - Series Installation Radiused Aluminum Jamb



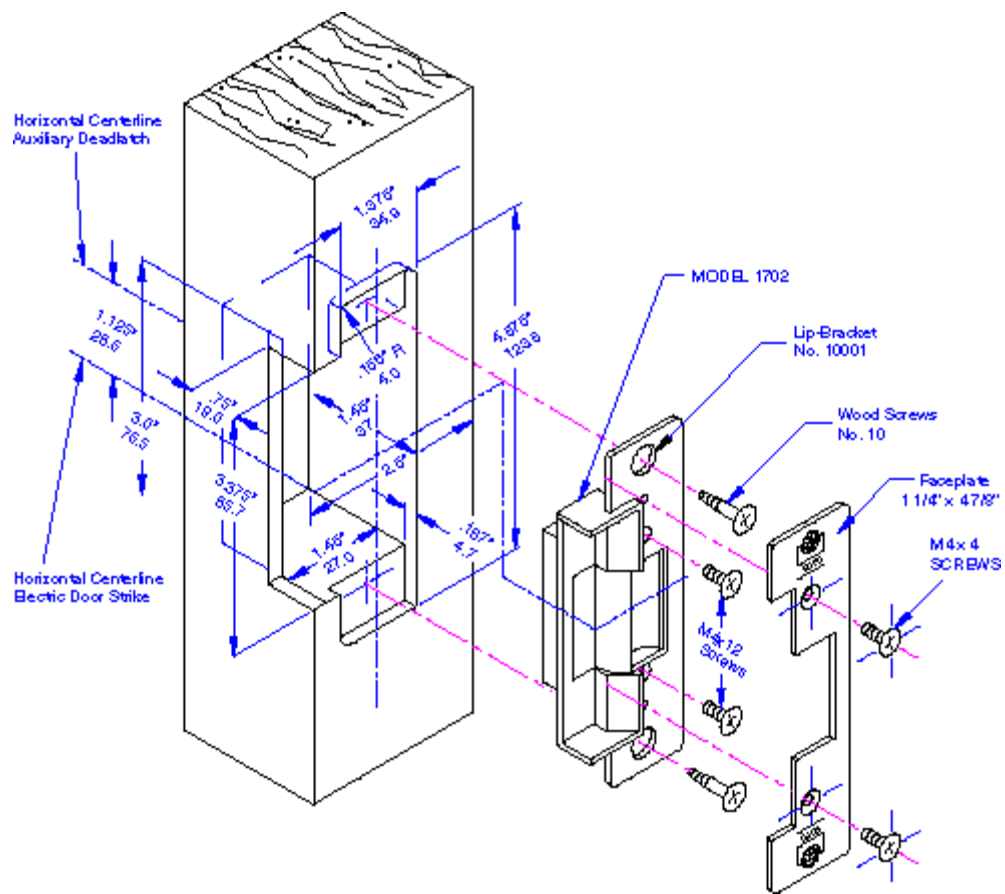
Note: Not to scale. Technical Data are subject to change without notice.  
 Dimensions in Inches and Millimeters

### 1702 - Series Installation Hollow Metal Jamb



Note: Not to scale. Technical Data are subject to change without notice.  
 Dimensions in Inches and Millimeters

## 1702 - Series Installation Wood Jamb



Note: Not to scale. Technical Data are subject to change without notice.  
 Dimensions in Inches and Millimeters