

DISPLAY CASE LOCKS

DISC TUMBLER

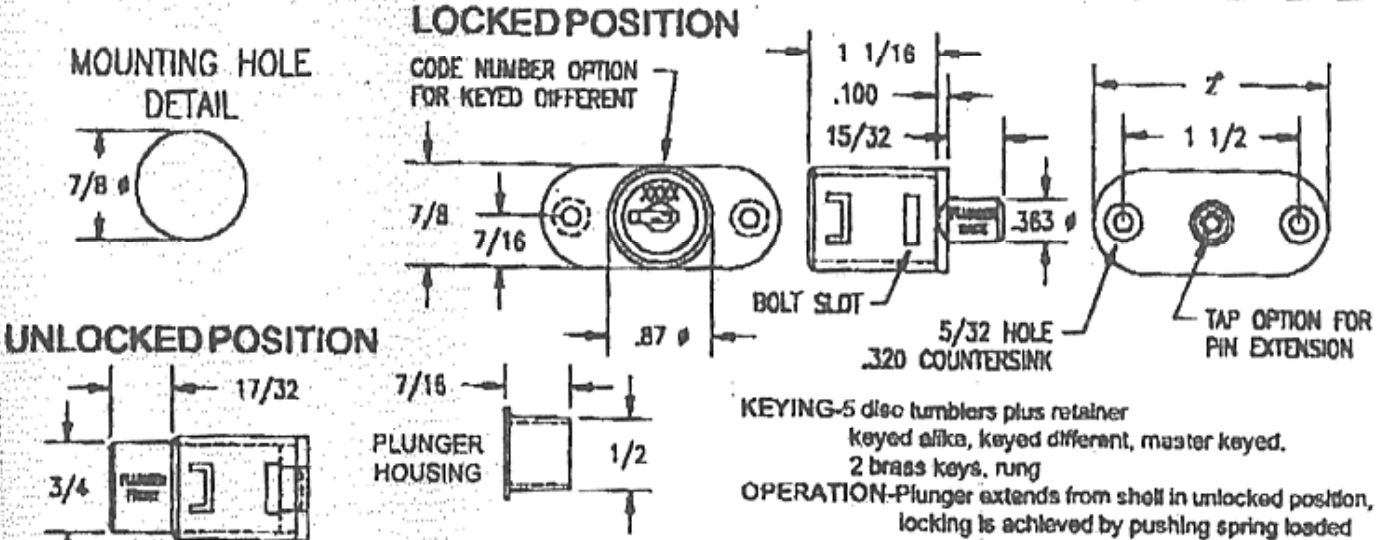
1030FM

SIZE 1 1/16

INSTAL-A-CORE
OR
STATIONARY CORE

Tolerances: .XXX ± .005 .XX ± .010 Fractions ± 1/64

Metric: multiply decimal X 25.4 to obtain mm.



APPLICATION: For locking display cases, drawers and sliding doors.

- KEYING**-5 disc tumblers plus retainer
keyed alike, keyed different, master keyed.
2 brass keys, rung
- OPERATION**-Plunger extends from shell in unlocked position, locking is achieved by pushing spring loaded plunger until it is flush with the face and catches at the bolt slot. Key is removed in lock position only.
- STANDARD LOCK**-Stationary core, flange flush mount
all finishes must be specified.
- OPTIONS**-Key number on face of core, Instal-a-core, #6-32 tapping for pin extension.
- ACCESSORIES**-#5 X 5/8 wood screws
-Plunger housing

CATALOG SERIES
1030FM STOCKED IN BRASS & NICKEL
SEE PAGE FOR OTHER FINISHES

Order On-line:
www.mrlock.com